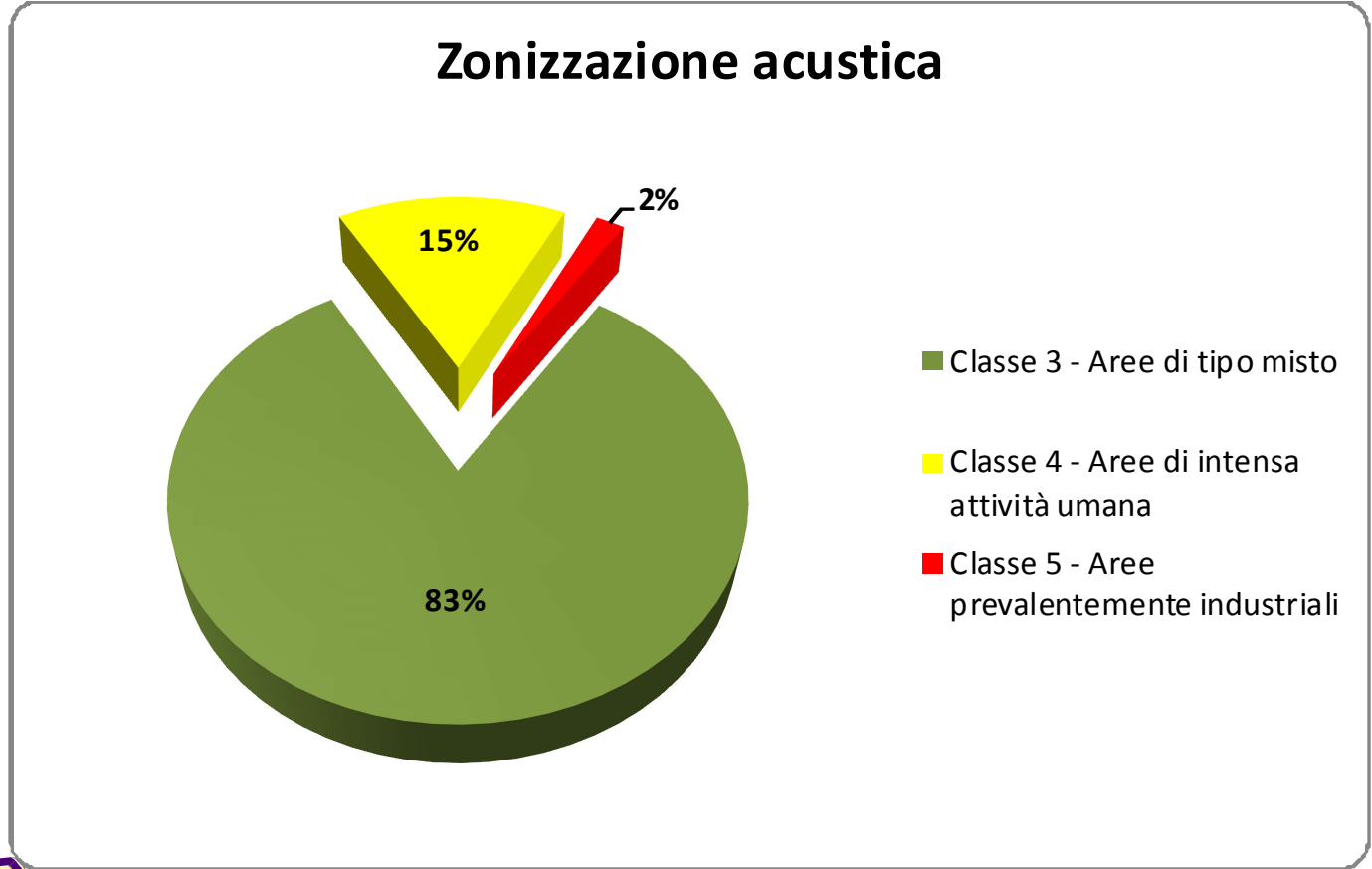
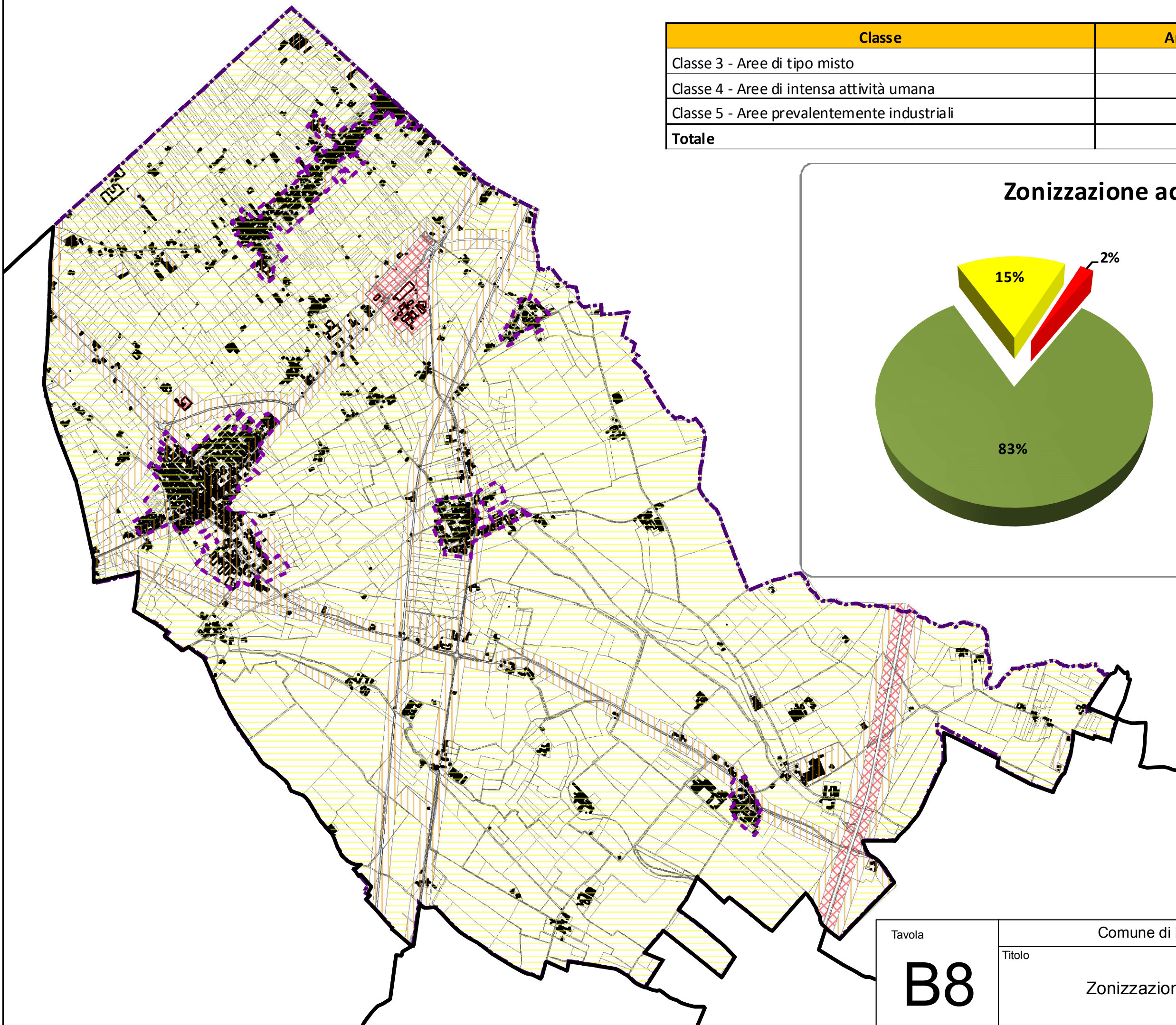


Classe	Area	Percentuali
Classe 3 - Aree di tipo misto	52.038.350	83%
Classe 4 - Aree di intensa attività umana	9.681.664	15%
Classe 5 - Aree prevalentemente industriali	1.222.408	2%
Totale	62.942.422	100%



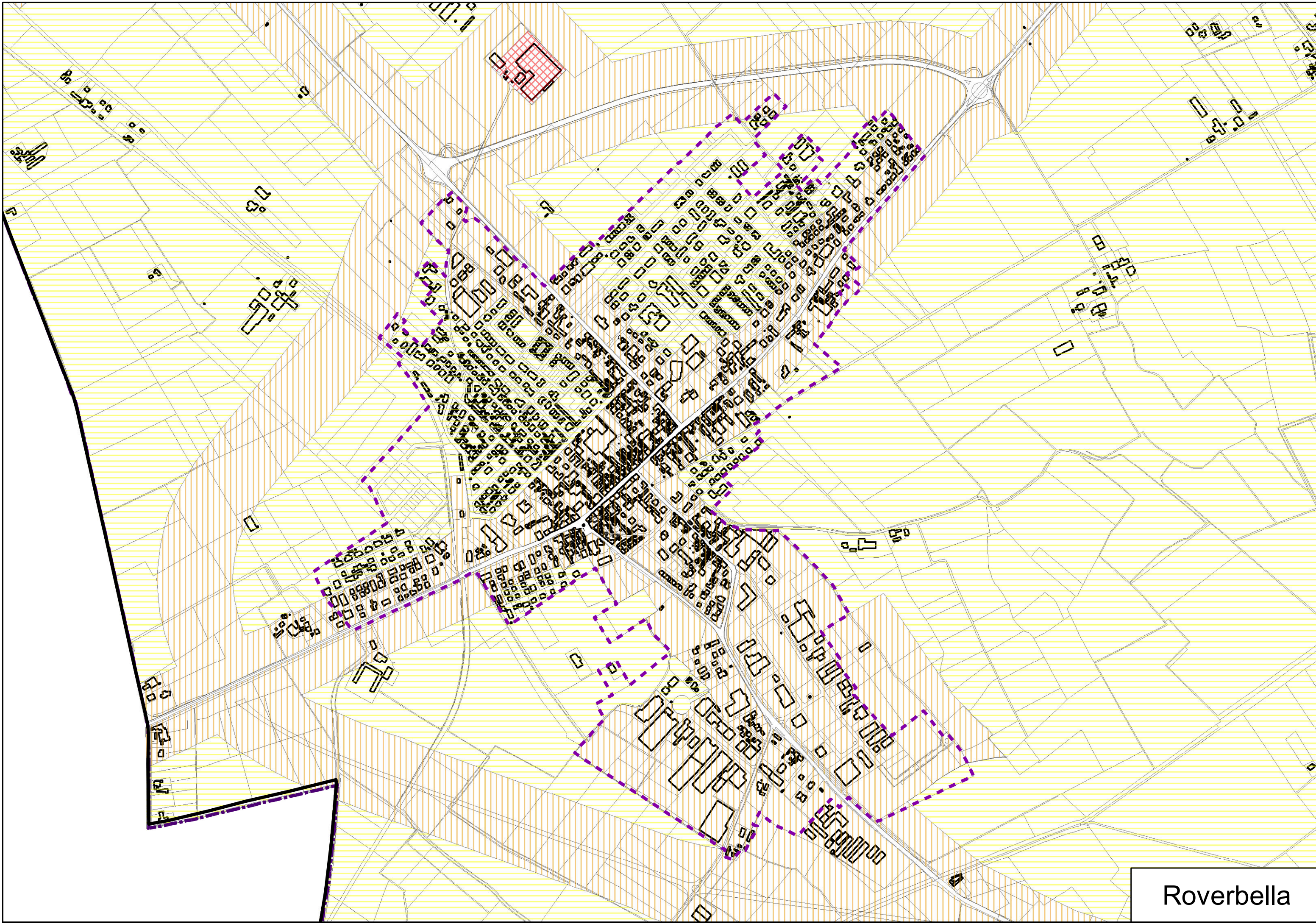
Legenda

- Confine catastale
- Confine centro abitato

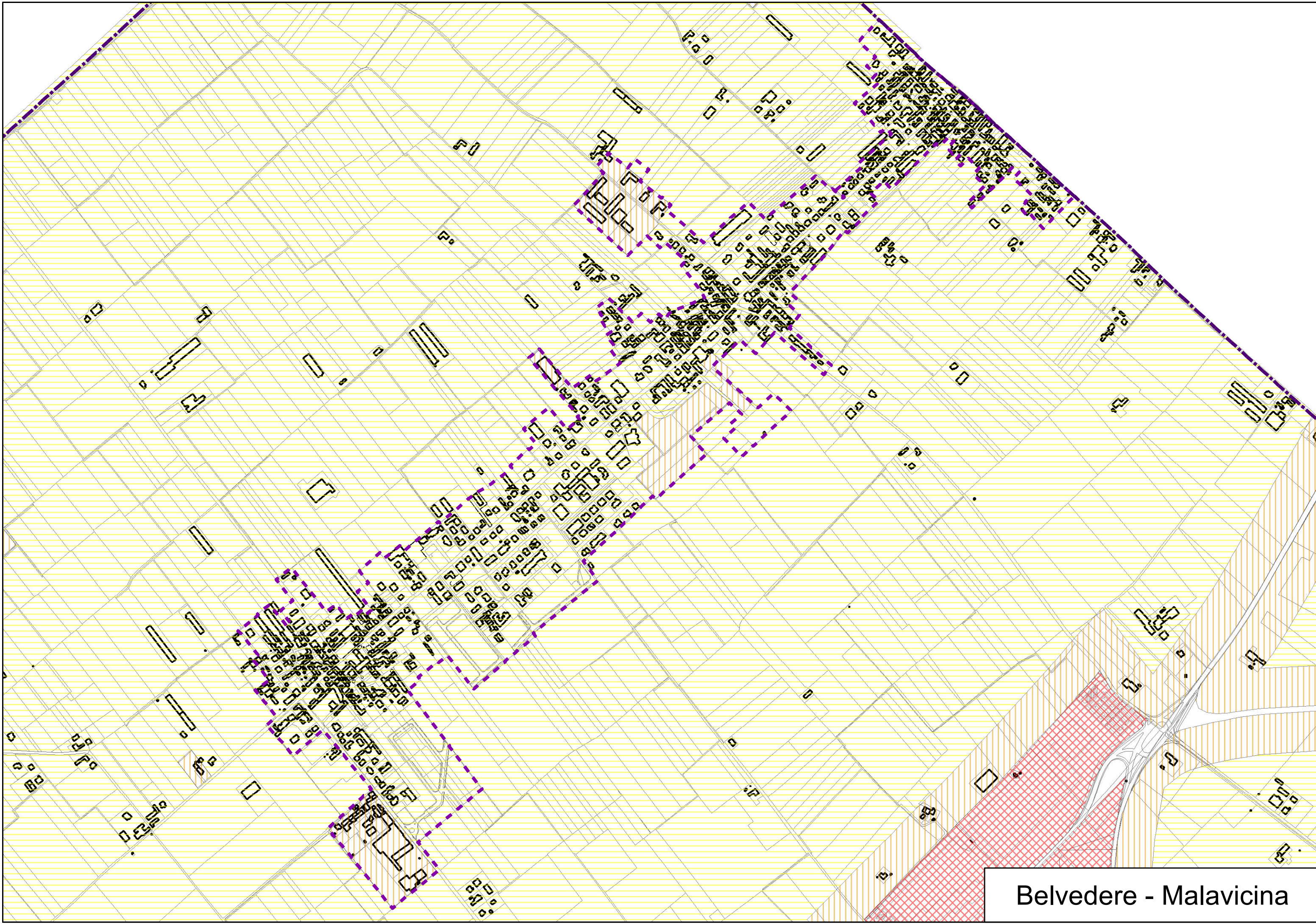
Zonizzazione acustica

- Classe 3
- Classe 4
- Classe 5

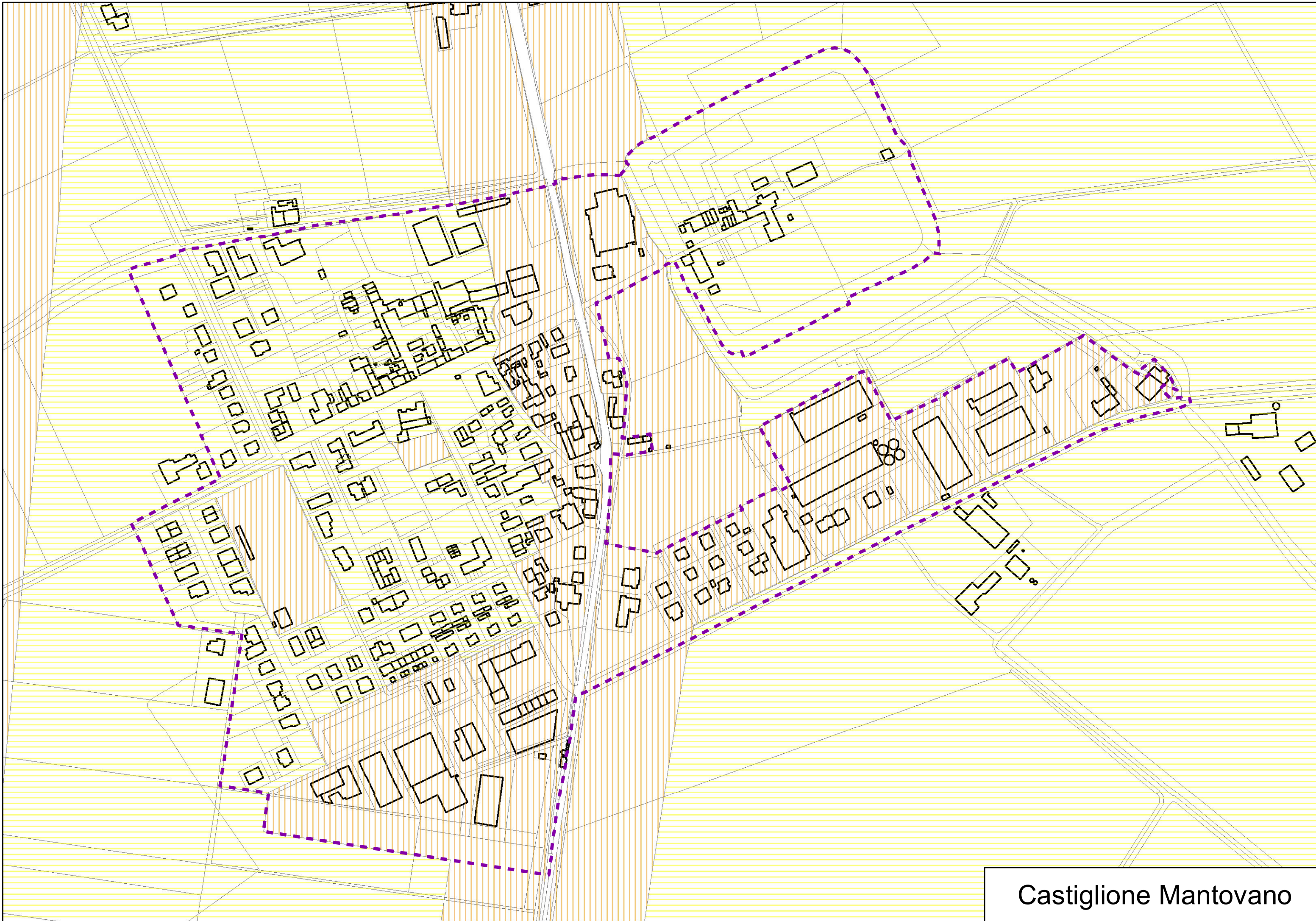
Tavola	Comune di Roverbella	Data
B8	Titolo	
	Zonizzazione acustica	Scala



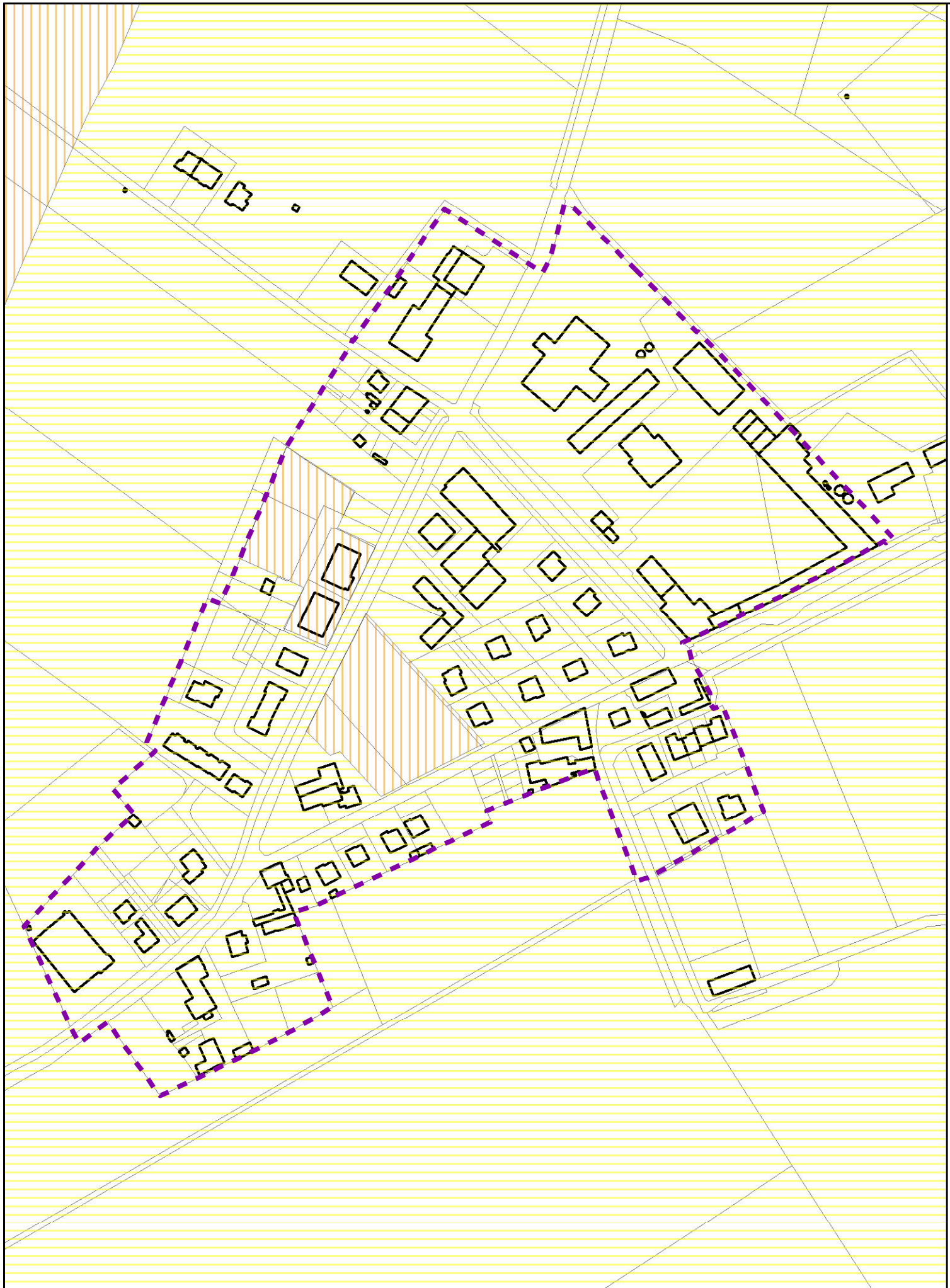
Roverbella



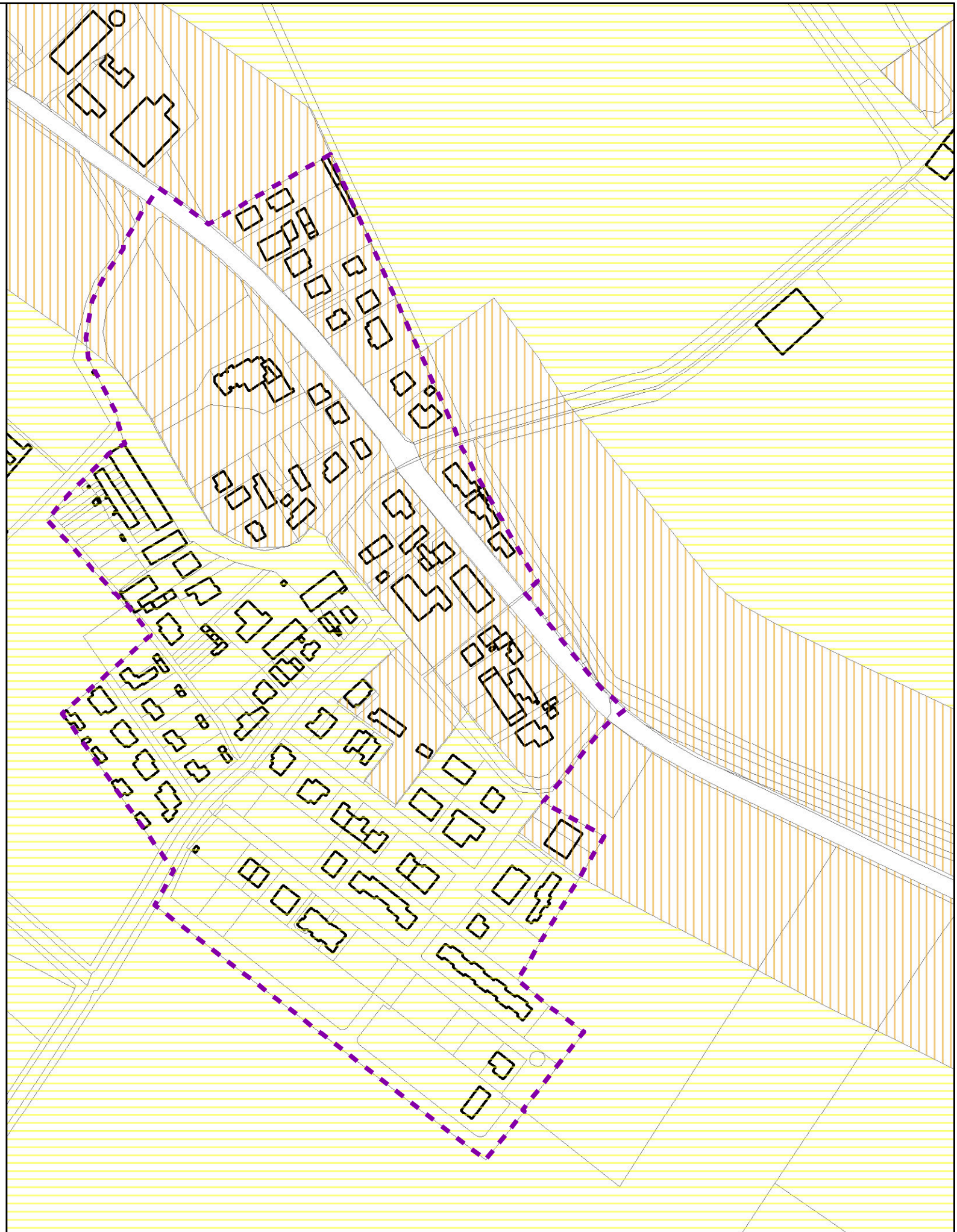
Belvedere - Malavicina



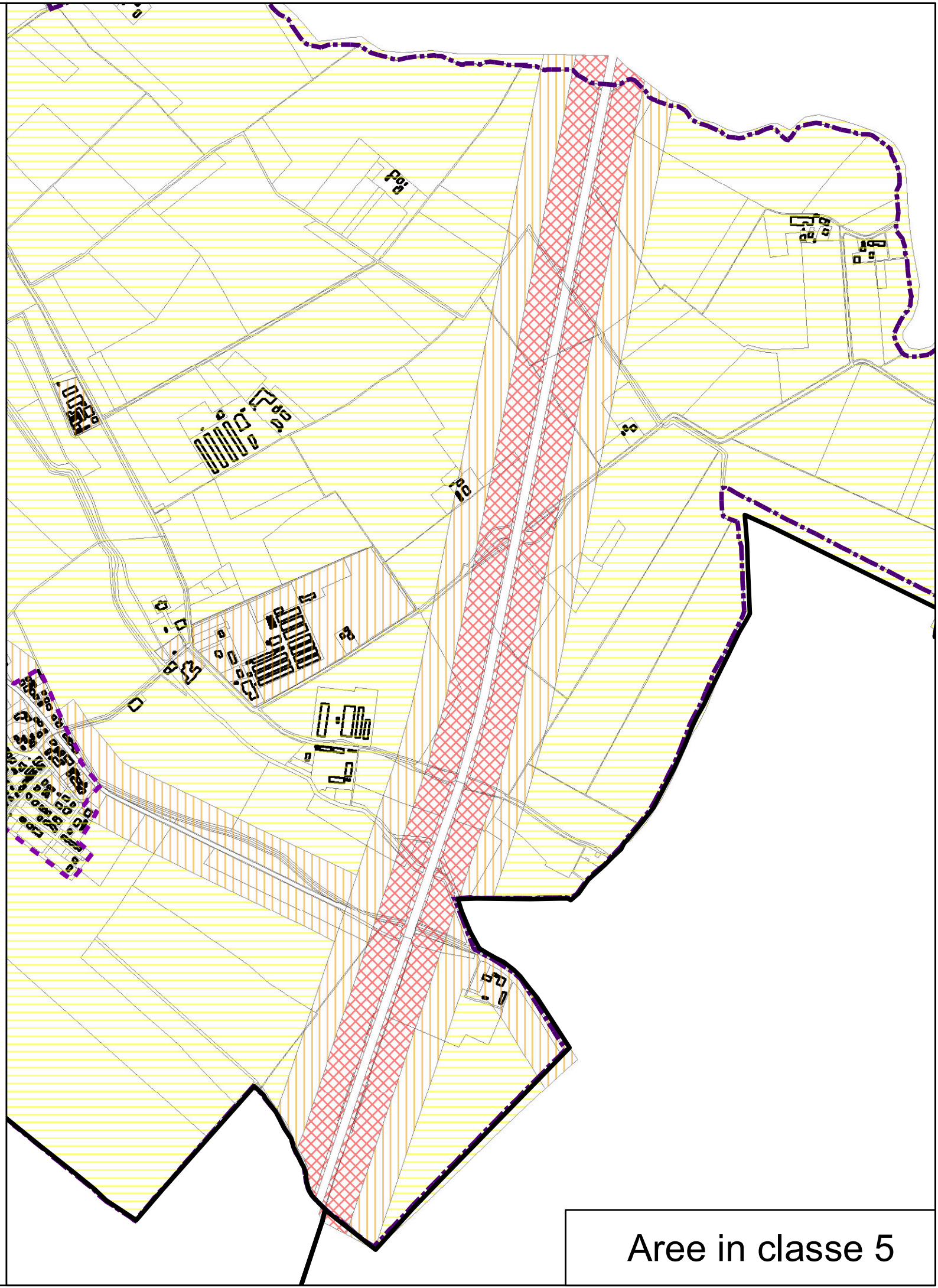
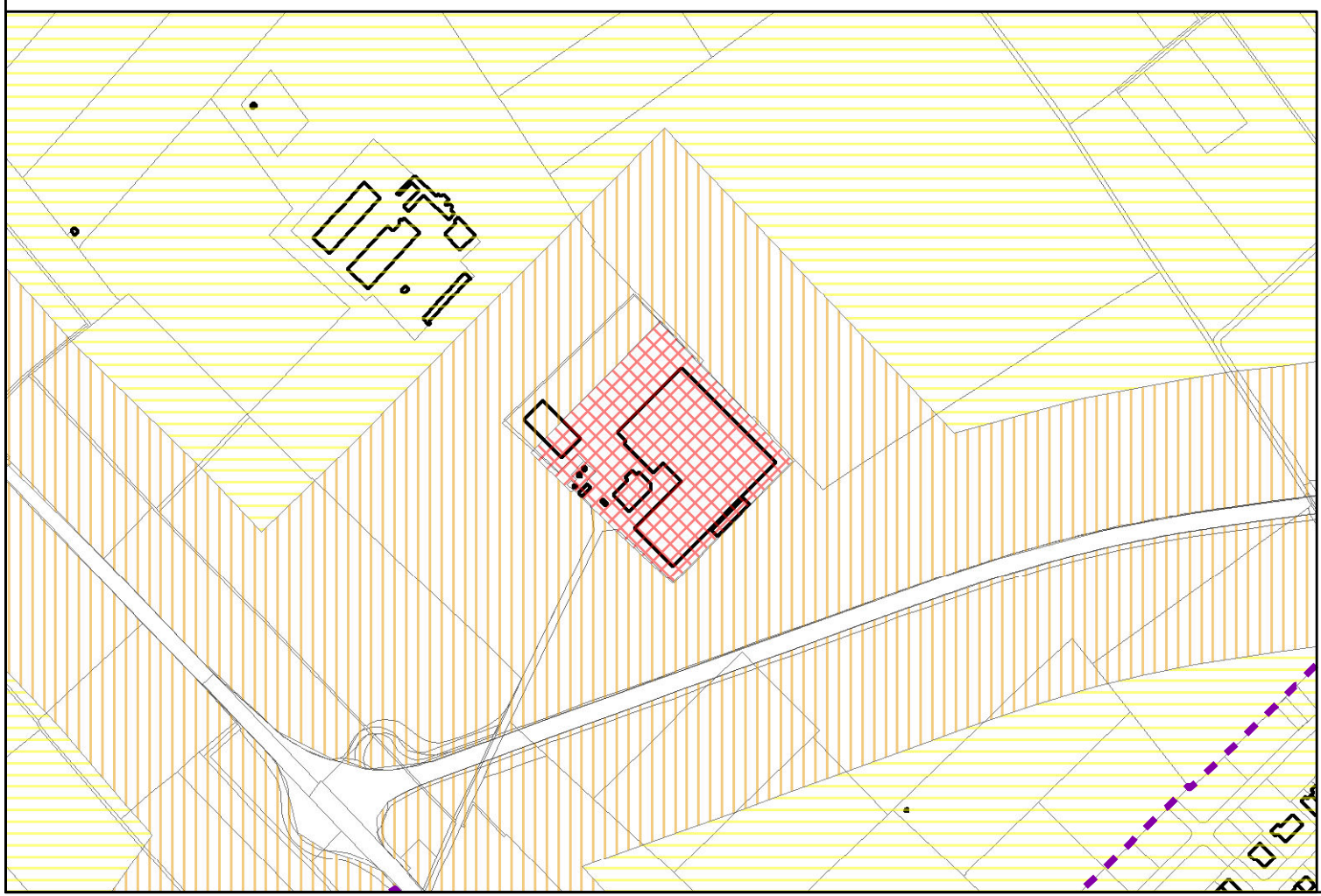
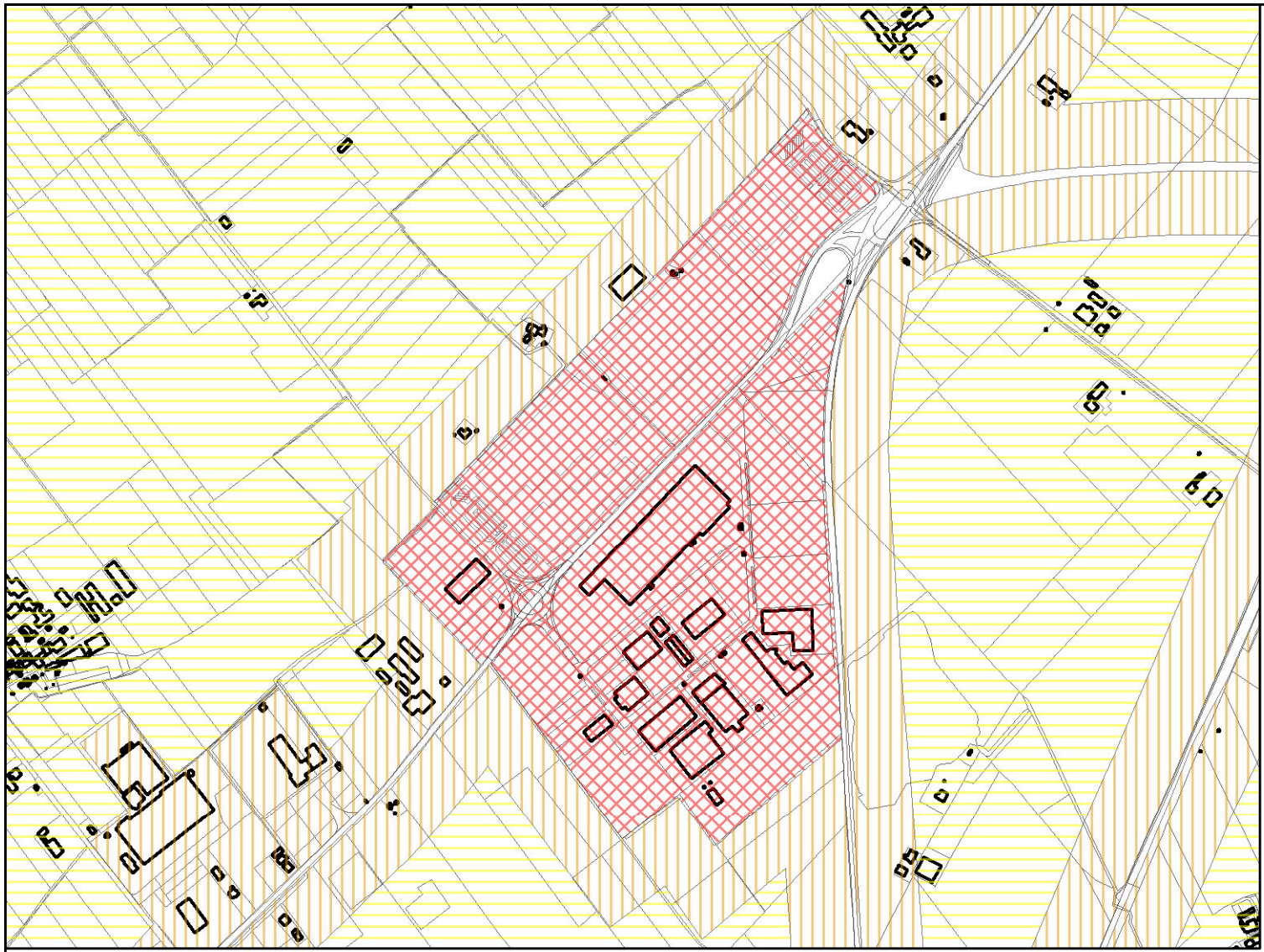
Castiglione Mantovano



Pellaloco



Canedole



Area in classe 5